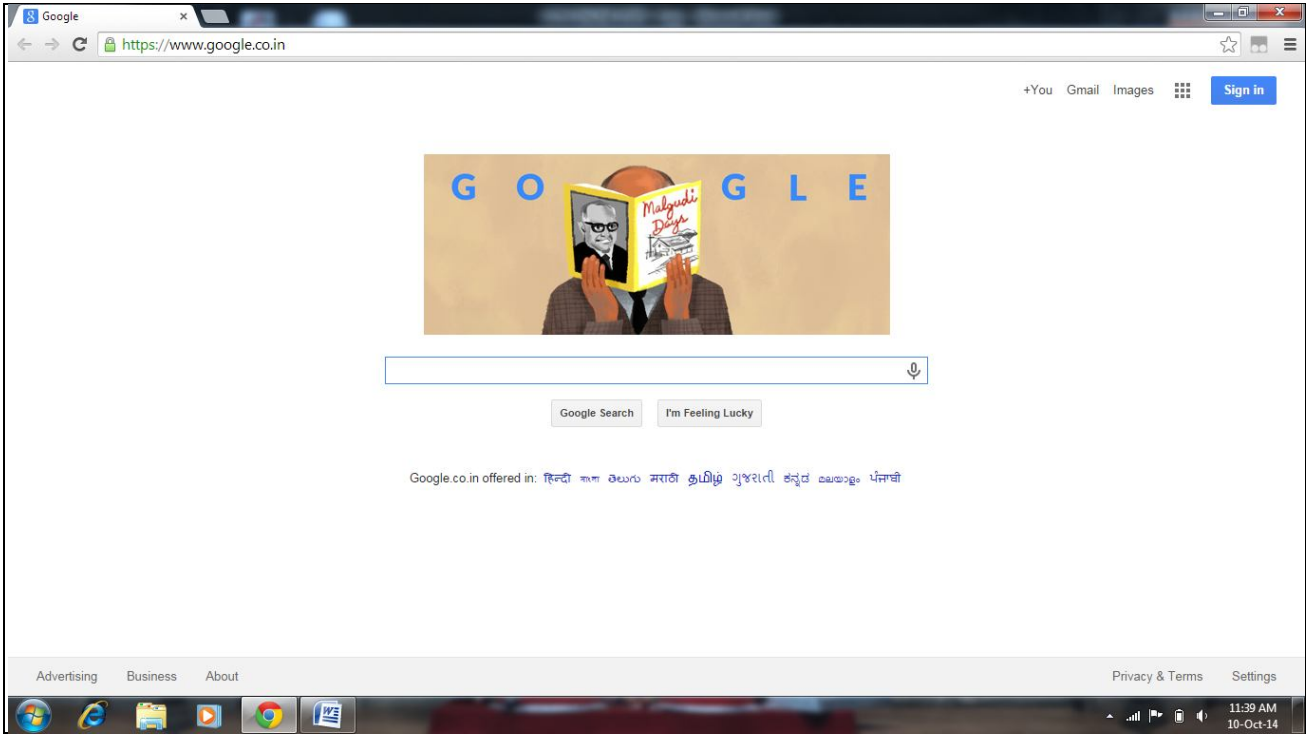


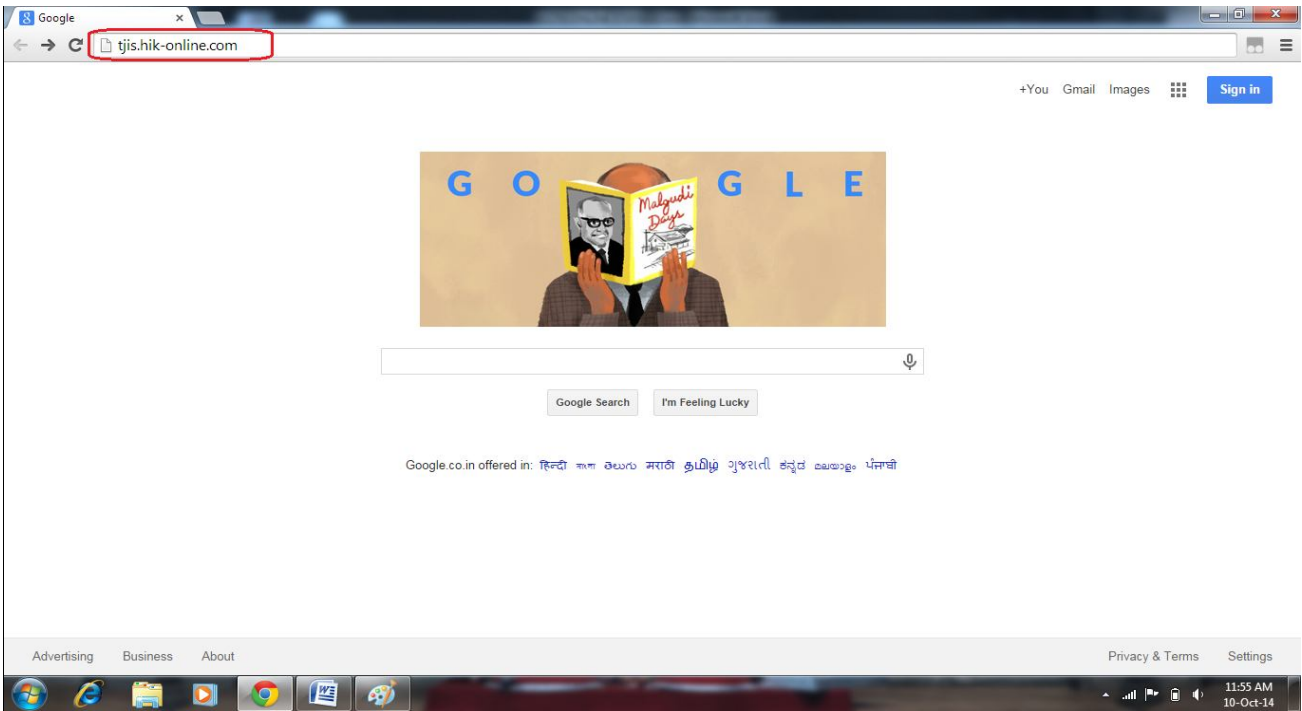
# PROCEDURE FOR PC / LAPTOP USERS

**STEP 1** > OPEN CHROME BROWSER (SEE- FIG: 1)



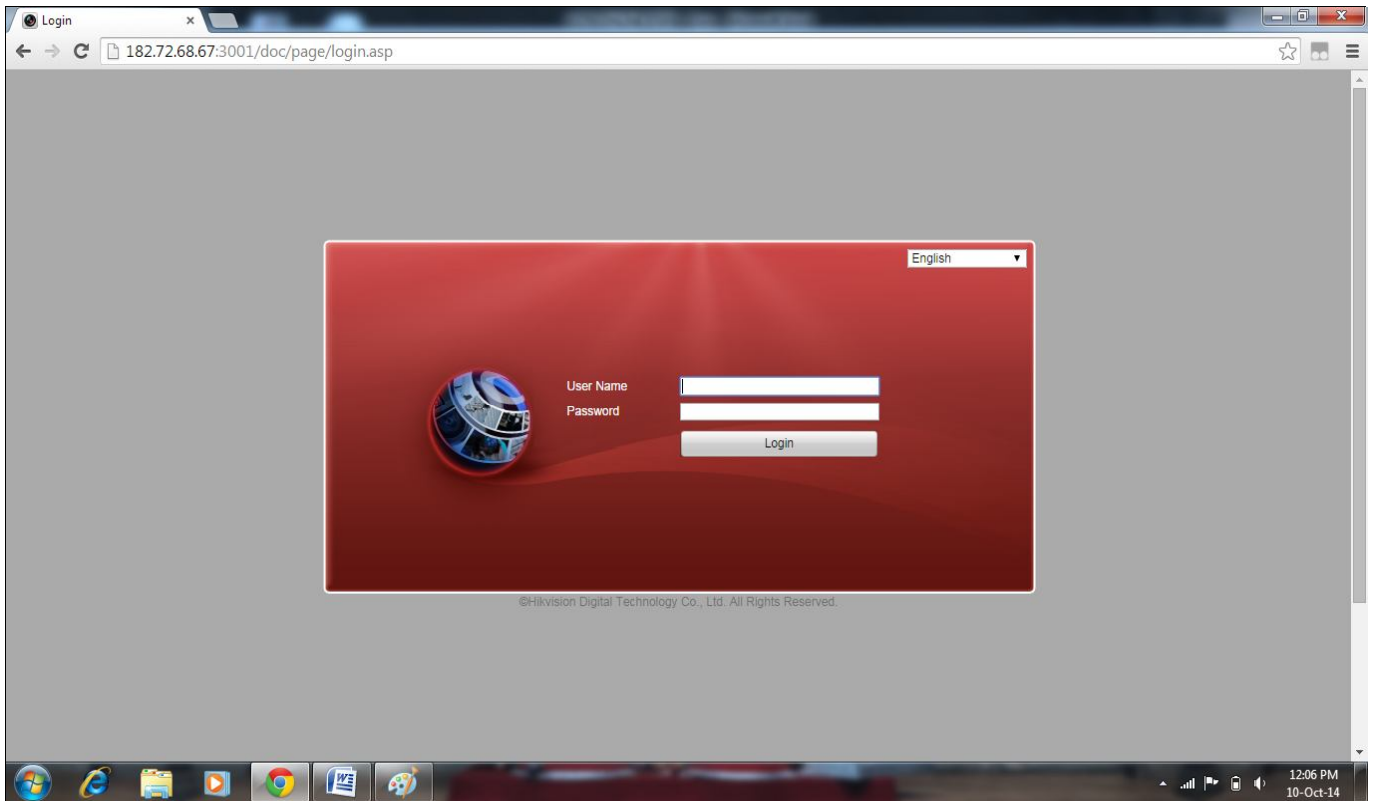
**Fig: 1**

**STEP 2** > ENTER - [tjis.hik-online.com](http://tjis.hik-online.com) IN ADDRESS BAR AND HIT THE ENTER KEY (SEE- FIG: 2)



**Fig: 2**

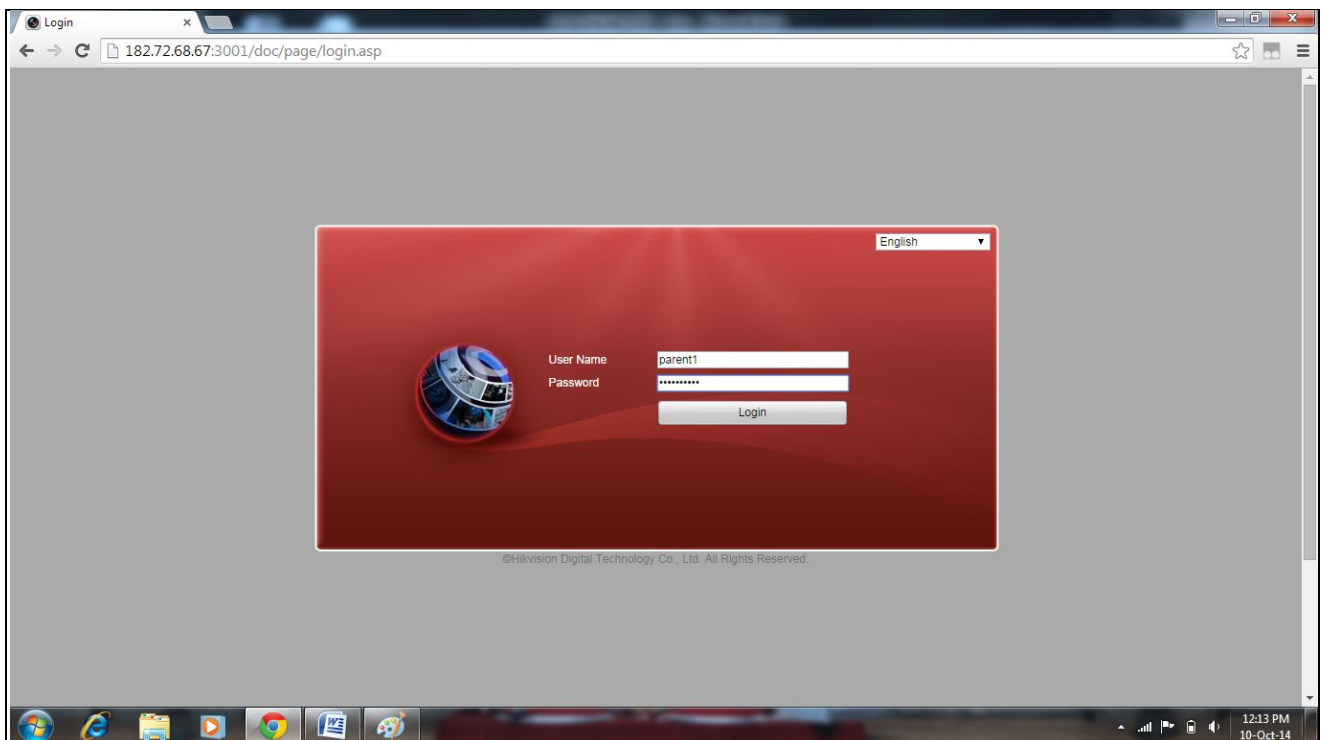
The Login page appears as shown in Fig: 3 below:



**Fig: 3**

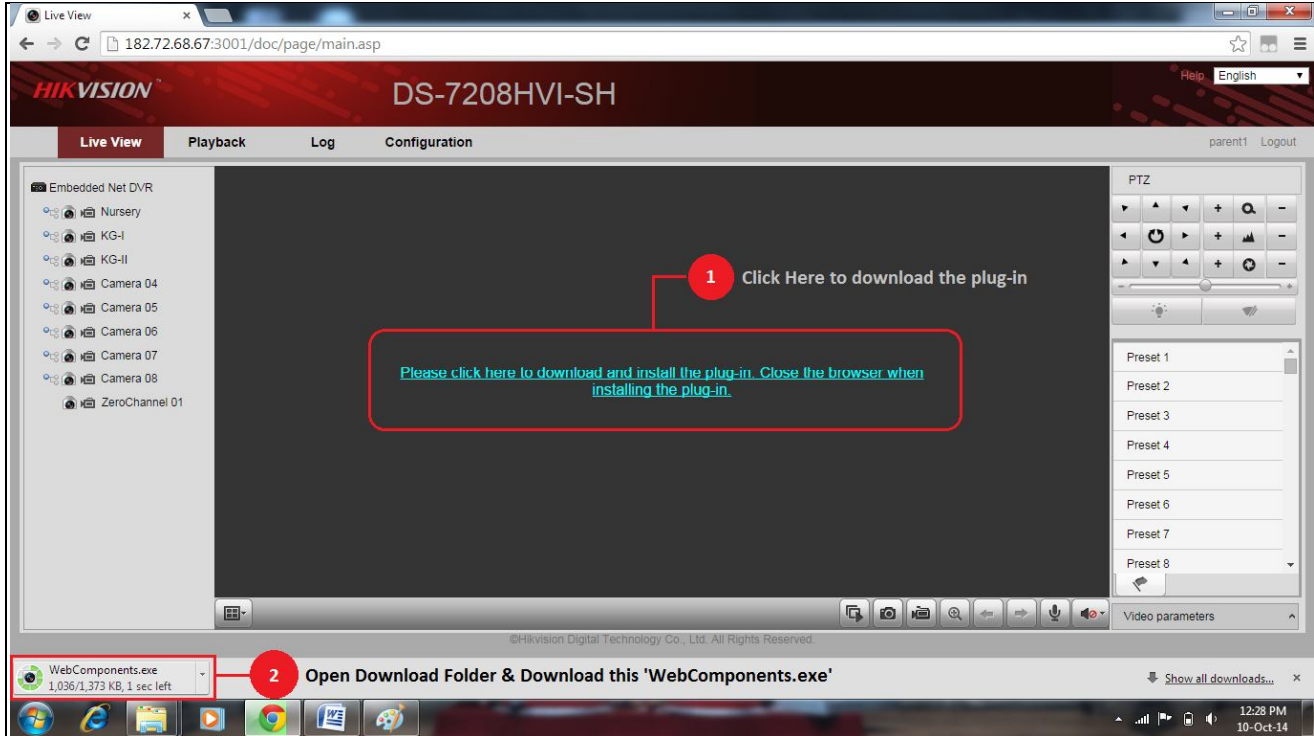
**STEP 3> ENTER USER NAME & PASSWORD AND CLICK ON 'LOGIN' BUTTON (SEE FIG: 4)**

[For User Name & Password please contact to **Mr. Anil Verma** on **9584461682**]



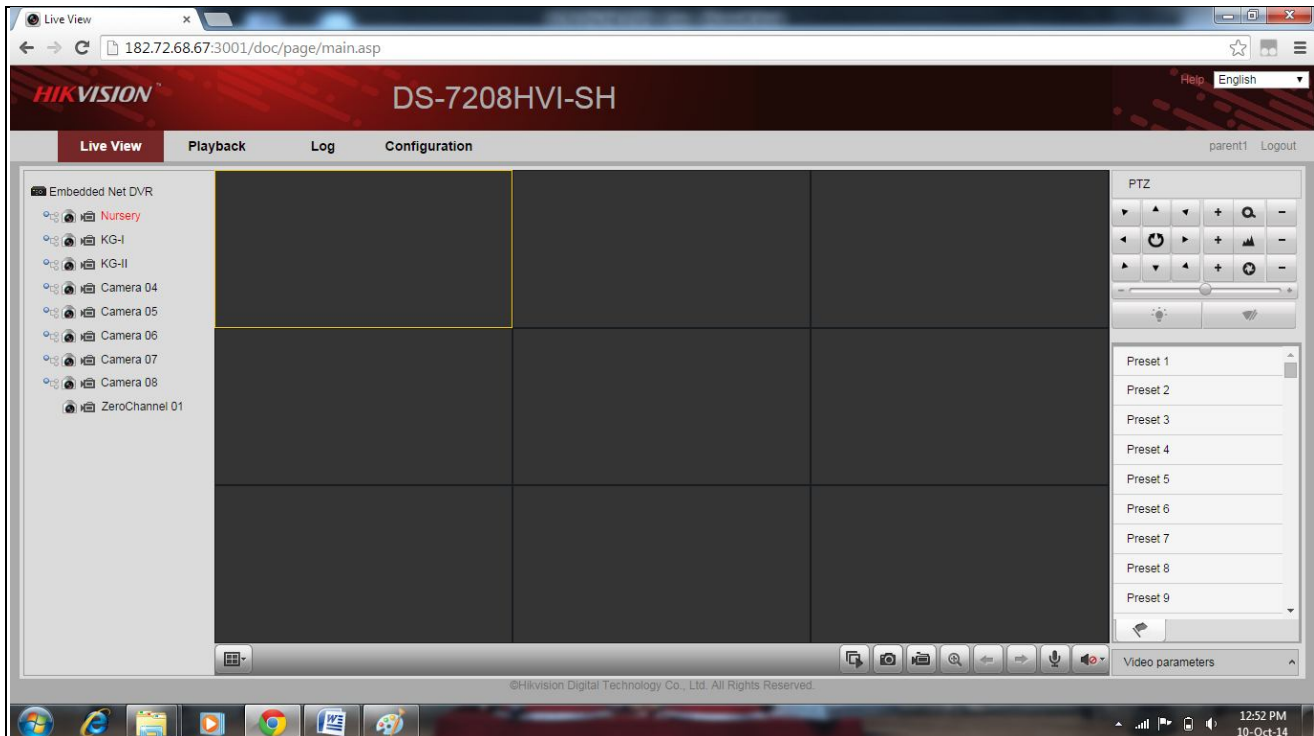
**Fig: 4**

**STEP 4> NOW DOWNLOAD THE PLUG-IN. OPEN THE DOWNLOAD FOLDER AFTER DOWNLOAD AND INSTALL THIS PLUG-IN 'WEBCOMPONENTS.EXE'. (SEE FIG: 5)**



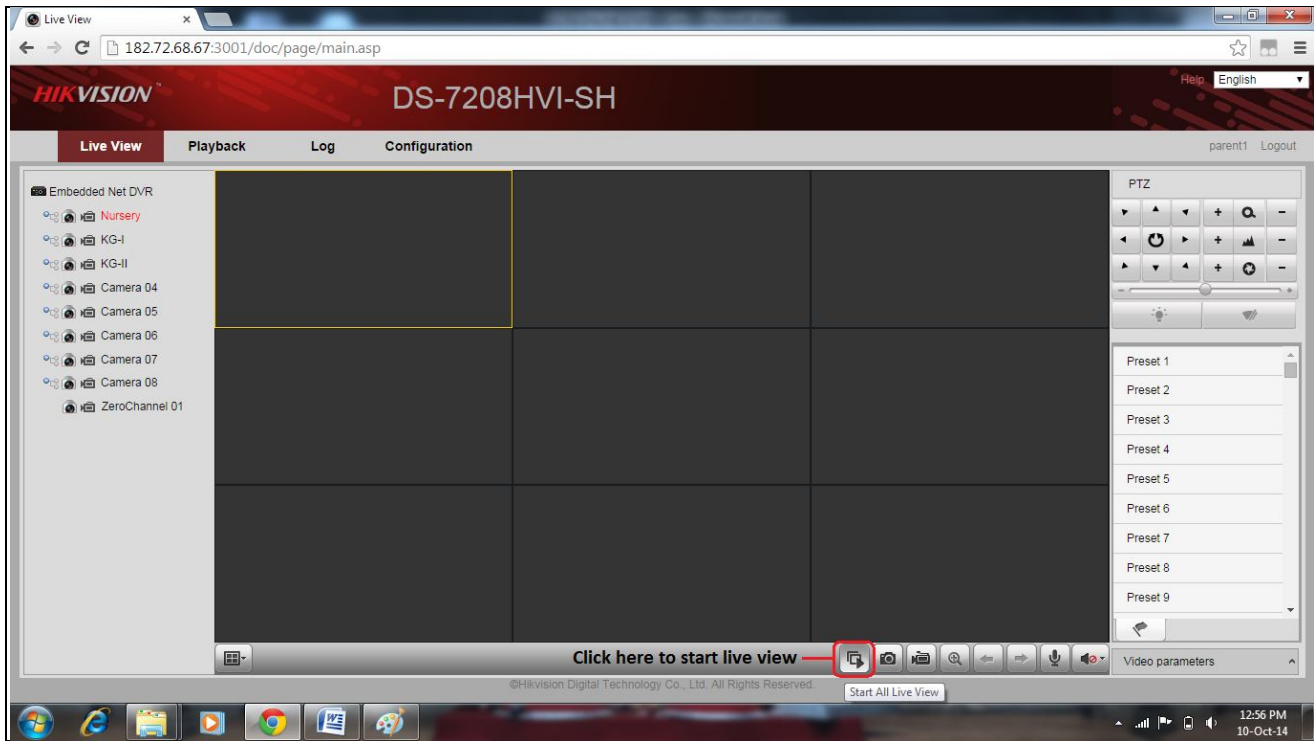
**Fig: 5**

**STEP 5> CLOSE AND RE-OPEN THE BROWSER AND LOGIN IT AGAIN. AFTER LOGIN PAGE WILL DISPLAY AS SHOWN IN THE IMAGE BELOW (SEE FIG: 6)**



**Fig: 6**

CLICK ON THE HIGHLIGHTED BUTTON TO START LIVE VIEW AS SHOWN IN BELOW IMAGE (SEE FIG: 7)



**Fig: 7**

NOW CAMERA WILL DISPLAY LIVE VIEW AS SHOWN IN BELOW IMAGE (SEE FIG: 8)



**Fig: 8**